

回转驱动编号方法 Number of slewing drive

×	×	×	× × ×	×
(1)	(2)	(3)	(4)	(5)

(1) 传动型式代号	Code of driven type
W: 蜗轮	Worm wheel
G: 斜齿	Bevel wheel
(2) 敞开、封闭型式代号	Code of open type、close type
B: 敞开式	Open type
R: 封闭式	Close type
(3) 内圈安装孔形式代号	Code of inner ring installation hole type
B: 螺纹孔	Bolt holes
C: 通孔	crew holes
(4) 滚道中心直径	Dia.of track center
(5) 液压马达位置	Hydraulic motor position
R:右侧	Right side
L:左侧	Left side

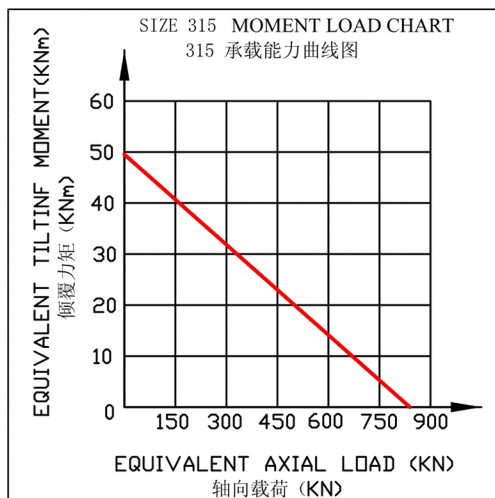
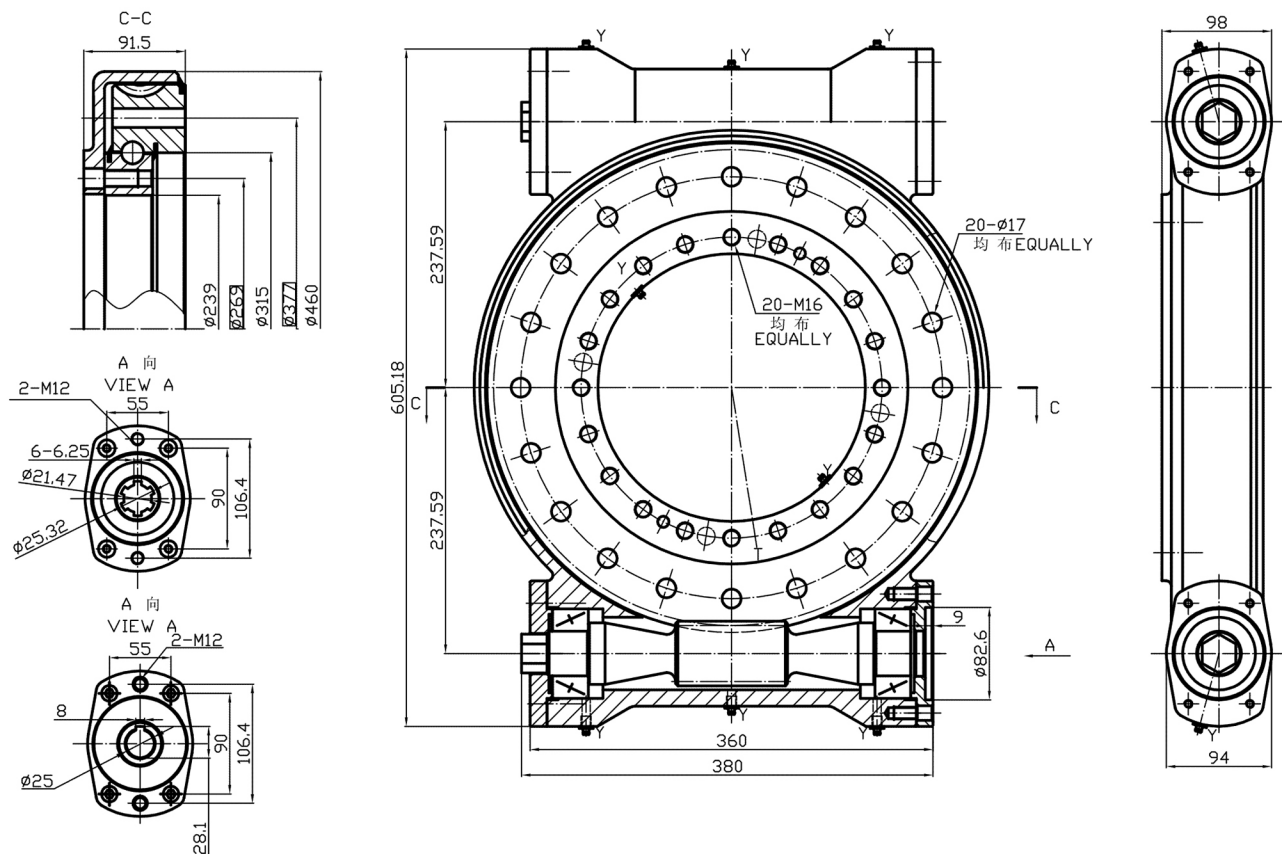
立式驱动编号方法 Number of slewing drive

× ×	×	×	× × ×	× ×	×
(1)	(2)	(3)	(4)	(5)	(6)

(1) 传动型式代号	Code of driven type
SG: 齿轮传动	Gear wheel
WG: 齿轮蜗轮组合传动	Gear wheel & Worm wheel
(2) 敞开、封闭型式代号	Code of open type、close type
B: 敞开式	Open type
R: 封闭式	Close type
(3) 内圈安装孔形式代号	Code of inner ring installation hole type
B: 螺纹孔	Bolt holes
C: 通孔	Screw holes
(4) 滚道中心直径	Dia. of track center
(5) 钢球直径	Dia. of ball
(6) 液压马达位置 (齿轮传动无)	Hydraulic motor position
R:右侧	Right side
L:左侧	Left side

DWR315

双驱动回转驱动 Closed type slewing drive

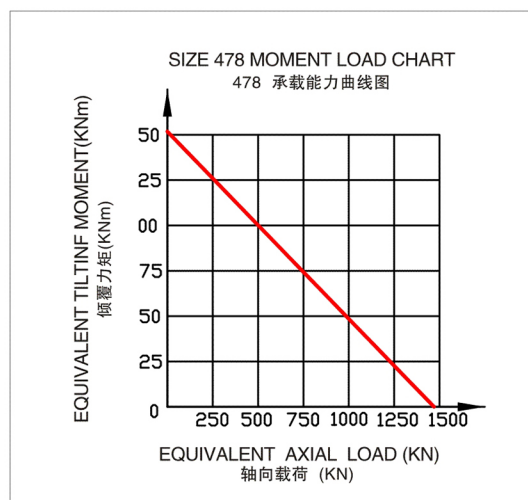
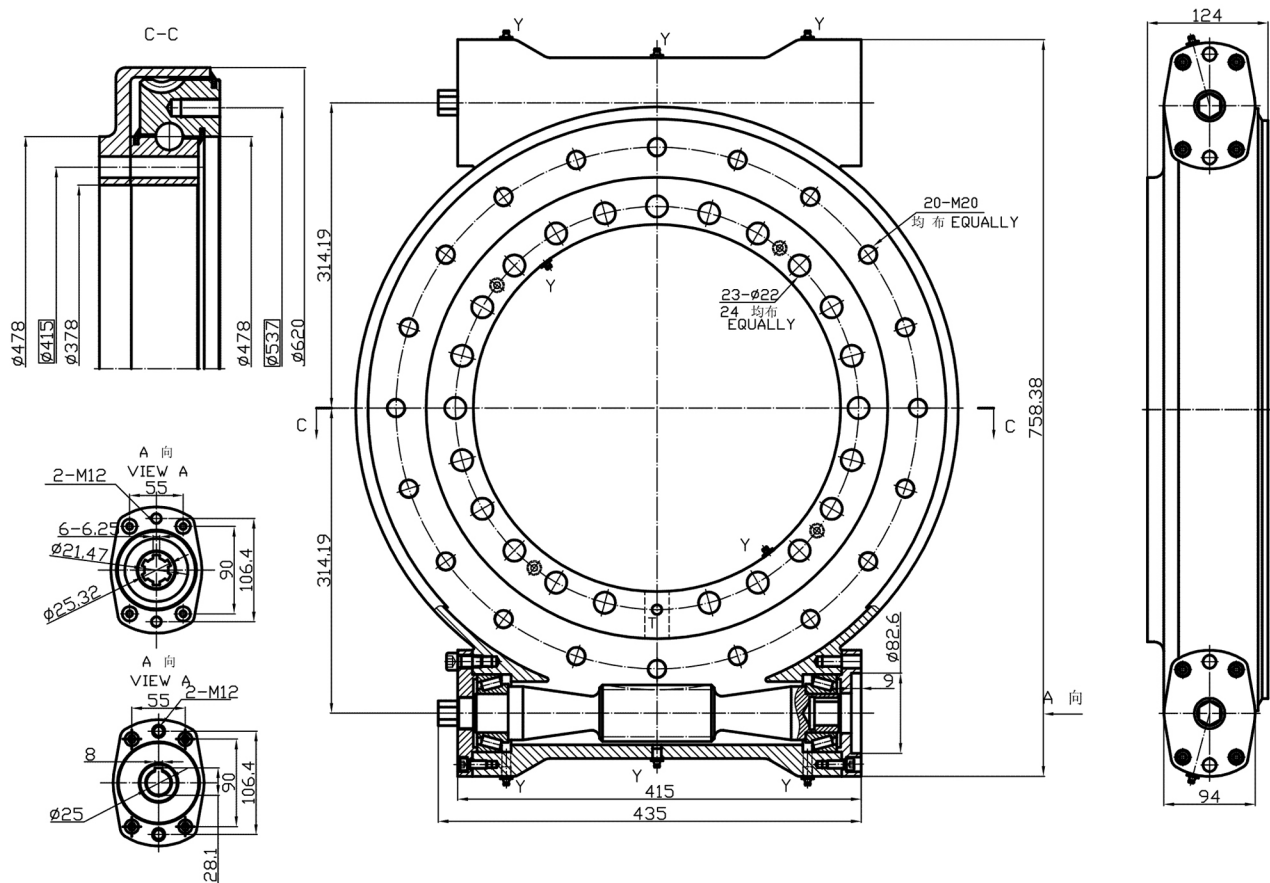


技术参数 TECHNICAL FEATURES

模数 Module	m	[mm]	5
速比 Gear ratio	i	-	83:1
转矩 Normal torque	Md	[Nm]	16320
最大转矩 Max torque	Mdmax	[Nm]	18700
轴向静载 Static load rating, axial	Coax	[kN]	845
径向静载 Static load rating, radial	Corad	[kN]	280

DWR478

双驱动回转驱动 Closed type slewing drive

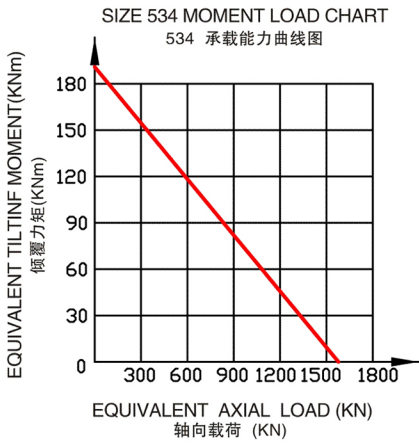
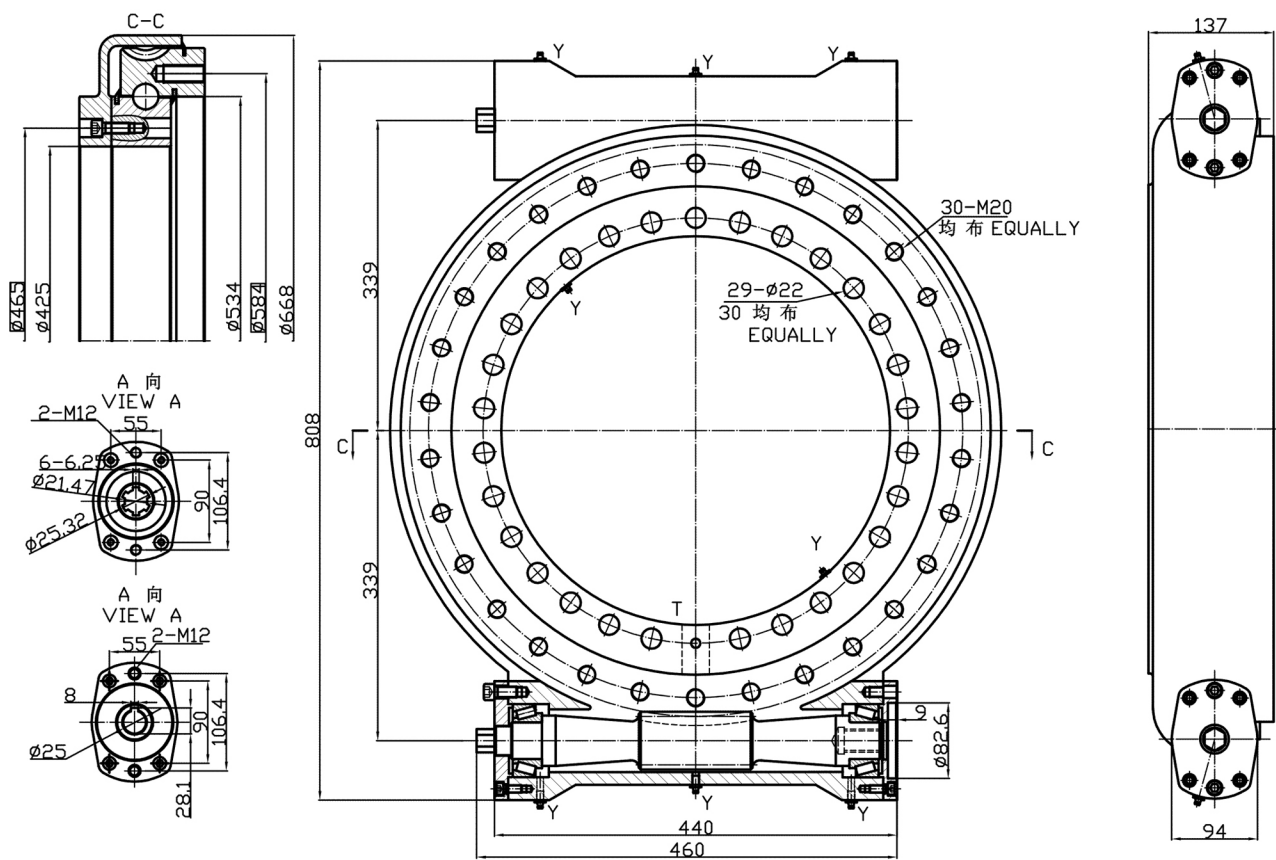


技术参数 TECHNICAL FEATURES

模数 Module	m	[mm]	5
速比 Gear ratio	i	-	116:1
转矩 Normal torque	Md	[Nm]	26000
最大转矩 Max torque	Mdmax	[Nm]	33800
轴向静载 Static load rating, axial	Coax	[kN]	1433
径向静载 Static load rating, radial	Corad	[kN]	520

DWR534

双驱动回转驱动 Closed type slewing drive



技术参数 TECHNICAL FEATURES

模数 Module	m	[mm]	5
速比 Gear ratio	i	-	126:1
转矩 Normal torque	Md	[Nm]	35250
最大转矩 Max torque	Mdmax	[Nm]	42300
轴向静载 Static load rating, axial	Coax	[kN]	1598
径向静载 Static load rating, radial	Corad	[kN]	640